

POWER SWEEP



**FOURTEEN NFL
POWER SWEEPS 2007-11
(ALL ★'S WINNING)**

\$10⁰⁰

www.ncsports.com

© 2012 Northcoast Sports Service

Volume 29 Issue 19

January 7-8, 2012

1-800-654-3448

BOWL ISSUE 93-58 62% LAST 5 YEARS*!! WILD CARD MATCHUPS INSIDE!

NORTHCOAST SPORTS SERVICE

P.O. BOX 450829

CLEVELAND, OHIO 44145

NEWS AND NOTES

HAWAII BOWL S Mississippi 24 Nevada (+9) 17 - Larry Fedora had accepted the job at N Carolina but opted to still coach this one. Fedora said about QB Davis "It wasn't his best game. Davis hit 18-41-165 and was off most of the night but did lead a game winning TD drive in the 4Q. NV was without its top WR Rishard Matthews who was a late scratch and the game featured a Hawaii Bowl record 17 punts with the 41 combined points being the fewest in the bowl's history. SM got their first 10 win season since 1988. SM got a 19 yd PR to the NV31 but settled for a 50 yd FG and missed it. 2 punts. NV went 62/5pl but on 3&4 from the 13 was int'd in the EZ. 3 punts. SM blk'd a punt and rec'd it for a TD with 14:06 2Q. NV went 81/13pl and got a 5 yd TD run, 7-7. NV went 68/4pl and got a 45 yd TD run by Mark. 14-7. SM ret' the KO to the NV36 but fmb'l'd. NV was SOD on 4&1 at their own 44 but SM would settle for a 48 yd FG, 14-10 (1:21). NV fmb'l'd the KO at their own 24 and SM got a 2 yd TD pass with :12 left in the half to lead 17-14. At the half NV had a 235-109 yd edge. 3Q 2 punts. SM got 1 FD and missed a 48 yd FG. 1 punt. SM went 33/8pl but was SOD on 4&6 at the NV39. SM fmb'l'd the punt at their own 14 but NV settled for a 37 yd FG, 17-17 (2:44). Three 3&outs. NV got 2 FD's to midfield and punted. SM got 1 FD to the NV44 and punted. NV went 3&out and SM went 68/7pl and got a 4 yd TD pass with 5:48 left, 24-17. NV got 1 FD and was SOD at the 50 with 3:56 left and SM would get 3 FD's to the 16 and took a knee 3x.

MILITARY BOWL Toledo 42 Air Force (+3) 41 - UT has the youngest HC in the country with 32 year old Matt Campbell who was in charge of them for the first time and delivered a 42-41 win. At the end of the game, AF appeared to tie it with a TD but lined up for the xp and ran a fake and the holder had the ball punched out while trying to run the option and UT held on for the win. AF had a 407-339 yd edge with the difference in the game being UT getting a 37 yd IR TD and also an 87 yd KR TD. Tim Jefferson was the first QB in service academy history to lead his team to 4 consecutive bowls and hit 13-22-159. UT missed a 47 yd FG on the opening poss but the teams would have 5 consecutive TD's with UT rec'ing an inside kick and getting a 41/1pl TD and also an 87 yd KR TD and they led 21-14 after 1Q. AF on 4&gl got a 1 yd TD run but on their next drive on 4&4 were SOD at the TU25. After a fmb'l, AF went 44/4pl for a TD and it was 28-28 at the half with AF having a 255-231 yd edge. UT got a 37 yd IR TD but it was 35-35 after 3Q's. The teams punted on 5 straight poss with UT's P pinning AF at the 3 twice. UT went 37/5pl for a TD after a 27 yd punt. The TD on 3&6 with a 33 yd pass with 5:01 left. AF went 78/12pl for a 4&3, 33 yd TD pass but the 2 pt failed.

INDEPENDENCE BOWL Missouri (-4) 41 North Carolina 24 - NC had an interim HC this year in Everett Withers and he accepted the DC job at Ohio St and this would be his final game at NC with the Heels having already hired Larry Fedora. It appeared NC's coaches had been busier job hunting whereas Missouri ended the season with a 4 game win streak for the first time since 1965. James Franklin was the MVP as he rushed for 142 and passed for 132 despite the game being played in rain and cold weather. He led MO to 31 pts in the 1H as the Tigers had a 318-166 yd edge and a 31-10 lead. MO's mascot "Truman the Tiger" actually shattered the Independence Trophy prior to the game in a pregame accident and they had to use a replacement. MO finished with a 513-353 yd edge. The game was NC 7-0 and MO drove 58, 80 and 81 yds for 2 TD's and a FG, 17-7 then got a fumble and an int setting up 40 and 59 yd drives for a 31-7 lead and NC got a 21 yd FG on the final play of the half, 31-10. MO was int'd at the NC17 to open the 3Q and after 2 punts NC went 77/5pl for a TD to get back to 31-17 but MO, after a 49 yd KR, went 34/5pl for a TD, 38-17. NC was SOD at the MO31 and MO went 60/11pl for a 26 yd FG, 41-17 (6:22). NC drove 62/6pl getting a 17 yd TD pass with 4:08 left to get within 17 and MO, with bkp QB Costello got, 3 FD's ending the game at the NC16.

LITTLE CAESARS PIZZA BOWL Purdue (-1) 37 W Michigan 32 - Tough loss for WM as they had an amazing 7 turnovers, allowed PU to recover 2 inside kicks and WM was also SOD twice on 4th down and allowed a 99 yd KR TD by Raheem Mostert. WM had 30-23 FD and 485-442 yd edges as Alex Carder hit 31-57-439 and WR Jordan White almost broke the NCAA bowl record with 13 rec's for 265 yds but on the final drive Carder fmb'l'd and PU rec'd with 1:50 which cost them a shot at it. There was a solid crowd of 46,177 on hand. PU was w/o top RB Ralph Bolden and Akeem Shavers came in ? but rushed for a career high 148 yds on 22 carries. There were some unusual plays in the game as WM twice turned it over but PU on the return turned it right back over. However, it resulted in 17 and 49 yd losses for WM as they had a 4&10 at the PU12 and fmb'l'd and PU ret'd it 21 yds to the WM39 but fmb'l'd it back. The game really turned when WM led 15-10 and allowed a 99 yd KR TD. PU then inside kicked and rec'd and drove 61/6pl for another TD and stunningly led 24-15 and after WM was SOD PU added a 19 yd FG on the last play of the half.

BELK BOWL NC State (-2) 31 Louisville 24 - Tom O'Brien has done extremely well in bowl games moving his record to 9-2 after a win over UL. While it was a 7 pt win, NCS led 31-10 with 6:31 left in the 3Q but UL had the ball at the NCS45 with 1:07 left but on 4&23 they were int'd at the 16. David Amerson who led the NCAA in int recorded 2 more incl a key 65 yd IR TD in the 3Q and he had the int with :41 left in the game at the NCS16. Amerson finished with an ACC record 13 int's this year. Cards frosh QB Teddy Bridgewater did have a solid game hitting 24-43-274 yds but had those 3 int's. Down 21 pts, UL did benefit from a fake

punt and a rec'd inside kick to get back into the game. An interesting decision came with 1:35 left 2Q when O'Brien passed up a 50 yd FG or a punt and opted to go for it on 4&2 at the UL33 but was SOD. Tied 7-7, UL got an int with 9:47 left 2Q and went 48/7pl for a 32 yd FG and the lead, 10-7 (6:56). NC went 80/5pl for a TD to lead 14-10 then UL was SOD on 4&1 at the NC32 with 2:11 left in the half. That play was huge as 2pl later NCS got a 68 yd TD pass and led 21-10 at the half with a 234-201 yd edge. Roughing the P and roughing the QB gave them a pair of FD's on a 60/14pl drive but they settled for a 34 yd FG. Amerson then got a weaving 65 yd IR TD to make it 31-10 (7:56). UL's TD with 3:55 left made it 31-24 setting up the NCS failed 4&2 try and the int. UL did finish with a 391-329 yd edge.

ALAMO BOWL Baylor (-9) 67 Washington 56 - Heisman Trophy winner Robert Griffin only threw for 1 TD pass but it was the highest scoring bowl game in regulation in NCAA history. The two combined for 1,397 yds with BU having a 777-620 yd edge but the final was a bit misleading as BU did jump out to a 21-7 lead but actually trailed 35-21 in late 2Q and 42-24 in the 3Q. In fact, they were down 49-39 and 56-53 with 9:40 left in the game. BU took the lead with 8:15 left on a 4 yd TD run and UW went for it on 4&8 from the BU39 and were SOD with 3:20 left. BU got 1 FD and with 1 more FD they could have run out the clock but Ganaway on 2&3 ripped off a 43 yd TD run with UW having just 10 players on the field which put them ahead of the spread giving them the cover with 2:28 left. UW led 42-31 and had a FD at the BU17 when they fmb'l'd. Later UW missed a 43 yd FG with 3:38 left in the 3Q and all'd BU to take the lead on the next poss. BU used a short KO and UW's OL Shelton, while fighting for extra yards, fumbled at their own 46 and BU took a knee. Terrance Ganaway had 5 TD's and ran for 200 yds on 21 carries. Keith Price outplayed Griffin hitting 23-37-438 yds and had an amazing 7 TD's with 4 pass and 3 rush. Price is just a soph and threw for a school record 29 TD's and will draw many comparisons to RG3 in the preseason Heisman articles next year. The Alamo Bowl added 800 temporary seats to take advantage of the Heisman winner playing in their bowl and the att of 65,256 was the 5th largest in bowl history.

ARMED FORCES BOWL BYU (+1) 24 Tulsa 21 - BYU's Riley Nelson appeared to be ready to spike the ball at the end of the game on a 2nd & gl from the 2 but then faked the spike and hit WR Hoffman in the EZ for a TD with :11 left as BYU won the Armed Forces Bowl. BYU had a 344-272 yd edge and got a 10 win season for the 5th time in Mendenhall's 7 years. A couple of key factors went in BYU's favor. Their P had an exceptional day with 6 punts pinning TU inside their 20 as TU had starting positions of 6, 7, 14, 12, 19 and 1 after punts. With :25 left in the half, BYU punted and TU fmb'l'd the punt on their own 17. BYU got a 17 yd TD pass with :12 left on the next play to take the 14-10 lead. BYU's final drive, which went 48/12pl for the TD was highlighted by a 4&9, Riley Nelson run of 14 yds which got them to the TU33 prior to the fake spike and TD.

HOLIDAY BOWL Texas (-3) 21 California 10 - UT finished with a 255-195 yd edge with their D getting 5 takeaways and 6 sacks. Cal is 0-5 vs UT dating back to 1959. The 1H was a defensive struggle and while Cal had an 8-4 FD edge, UT had a 92-73 yd edge. Cal got a 47 yd FG on their opening drive of 40/11. UT rec'd a fmb'l at the Cal19 late 1Q but missed a 38 yd FG. UT's TD drive in the 2Q was 48/9pl after a 24 yd punt for the 7-3 lead (6:08). Cal opened the 3Q with a 69/11pl drive for a 6 yd TD, 10-7 (9:47) but UT went 76/4pl and got a 47 yd TD pass on the next poss to lead 14-10 (8:06). Cal got a PR to the UT27 but fmb'l'd on 3&27 after a PF and TX rec'd at the Cal44 and basically put the game away 3 plays later with a 4 yd TD run, 21-10 (14:57). Cal punted twice and then fmb'l'd on their own 29 with 3:24 left. UT got a pair of FD's to the Cal 8 and took a knee to end it.

CHAMPS SPORTS BOWL Florida St (-3) 18 Notre Dame 14 - ND led this game 14-0 as FSU started 4 frosh on the O-line and they struggled in the first 1.5Q. The Seminoles had just 18 yds offense in the 1Q but that O-line solidified and FSU would pile up 186 yds in the 2H. ND shuffled between QB's Tommy Rees who hit 16-27-163 and Andrew Hendrix who was 3-8-24. Michael Floyd caught a juggling TD pass in the 3Q but got inj'd on the play and was limited after that. ND's Manti Te'o had 13 kiks and a sk. The only TD in the 1H came on a ND 29 yd FR TD by Motta. ND did get a 41 yd PR to the FSU37 and on 1&gl from the 4 was int'd in the EZ 1pl before their 29 yd FR TD. ND missed a 47 yd FG with :09 left 1Q. FSU opened 3 yds on 4&4 and was SOD at the ND37 (7:00 2Q). FSU had a 104-91 yd edge at the half. ND opened the 3Q with a 62/9pl drive for a TD and a 14-0 lead (11:24). FSU got a 77 yd KR to the ND21 and got a 42 yd FG, 14-3 then went 84/10pl for an 18 yd TD pass, 14-9 (14:54). FSU got a 17 yd IR to the ND18 and 2pl later a 15 yd TD pass gave them the lead but the 2pt failed, 15-14. FSU went 71/9pl and settled for a 29 yd FG with 8:05 left, which put them ahead of the spread. ND did get a face mask on FSU on a PR and started at the FSU28 and was at the 18 when on 1st & 20 after a hold at the 28, they were int'd in the EZ with 2:48 left.

INSIGHT BOWL Oklahoma (-14) 31 Iowa 14 It was a miracle cover for OU. At the end of the game, IU was down by 10 and faced a 4&6 from their own 30 and gained 5 yds. OU was just trying to run the clock out. On 4&1 at the IU21 where a FD would have had them run out the clock, QB Bell ripped off a 21 yd TD run for a 17 pt win. Landry Jones hit just 16-25-161 yds with 1 TD and 1 int. IU trailed 21-0 and an ESPN skycam crashed the field with minutes left, narrowly missing WR McNutt. James Vandenberg hit 23-44-216 yds and IU was playing without their starting RB Marcus Cocker who was susp'd. Jordan Canzeri led with 58 yds on 22 carries. A couple of interesting stats out of the game were at half IU had a 134-89 yd edge. They had a 38 yd pass wiped out by an illegal formation and the 64/10pl drive end on a SOD at the OU9 and the Sooners had a 5 yd "drive" for a TD after an int and only 1 true offensive drive (66/13) which got them a 2Q TD and a 14-0 lead. It was 21-14 when OU got a 35 yd FG with just 2:28 left and IU was SOD on 4&6 gaining 5 yds with OU getting that 4&1, 21 yd TD run with :45 left.

* current record as of 1/17/12



BOWL LATE PHONES 2007 - 2011 37-20 65%

'07-11 REG SSN GAMES OF MONTH (Y) 33-14 70%!

WE VALUE YOUR OPINION

The title on page three's questionnaire is not just a headline, it is really the way we feel. Every year since we started Power Sweep in 1984 (Northcoast Sports started in 1982, Power Sweep started in our 3rd year), we have had this questionnaire in the Newsletter. For those of you that have been with us since 1984, you know we have improved Power Sweep 1,000% since its inception. For those of you that have not, we have added many new sections. Some that have been added through the years include: **Computer Corner**, **Last Week's Stats**, **NFL Standings vs the Spread** (all important current spread records at your fingertips), **System Of The Week**, **Past History Matchups** *online (not only last year's stats but how the game was played & the series history), **Pro Angle Section**, **Opening Lines** (so you can see how the line changes from Sunday night & it also includes the **VALUED Northcoast Line**), **More Write-ups On Games** (back in 1984 we wrote one line on each game but now each forecast is packed with a full paragraph of analysis), **News And Notes** (this Front Page commentary reviews interesting things you cannot find in your local sports page), **Pro Over/Unders**, **Extra College Plays** and **NFL Power Ratings**. The majority of the sections we have added through the years are because **YOU** asked for them. As we said at the start, Power Sweep has improved 1,000% since it started in 1984. Our goal is not to be happy with the level we are at but to improve it another 1,000% over the NEXT twenty-eight years! We are already hard at work on the 2012 season. Since we do not follow basketball, we spend the months of February through July working solely on football. Please fill out the questionnaire on page 3 & let us know your favorite sections & what **YOU** would like to see in 2012. For taking some of your valuable time to fill it out, we will give you some discounts on products for next year. **Thank You For Reading Power Sweep!!!**

NFL Playoff Box Scores

2010 WILD CARD ROUND							2009 WILD CARD ROUND							2008 WILD CARD ROUND							2007 WILD CARD ROUND						
SEED/TEAM	LINE	SC	FD	RA-RY	CO-AT-PY	I-F	SEED/TEAM	LINE	SC	FD	RA-RY	CO-AT-PY	I-F	SEED/TEAM	LINE	SC	FD	RA-RY	CO-AT-PY	I-F	SEED/TEAM	LINE	SC	FD	RA-RY	CO-AT-PY	I-F
5 New Orleans	-10	36	32	22-77	39-60-397	0-1	5 NY Jets	45	24	15	41-171	12-15-182	0-0	5 Atlanta	50'	24	20	24-60	26-40-190	2-1	6 Washington	39	14	21	29-75	29-50-244	2-0
4 Seattle	45	41	19	24-150	22-35-265	1-0	4 Cincinnati	-2'	14	18	22-171	18-36-110	1-1	4 Arizona	E	30	15	28-86	19-32-271	1-0	3 Seattle	-3	35	14	21-77	20-32-227	2-0
6 NY Jets	45	17	23	38-169	18-31-184	1-0	6 Baltimore	43	33	16	52-234	4-10-34	1-1	5 Indianapolis	49	17	17	22-64	25-42-302	0-0	5 Jacksonville	-2'	31	14	29-135	9-21-104	2-0
3 Indianapolis	-2'	16	16	27-93	18-26-219	0-0	3 New England	-3'	14	27	35-198	23-35-228	0-1	4 San Diego	-1	23	26	33-167	20-36-190	1-1	4 Pittsburgh	40	29	24	26-43	29-42-297	3-1
5 Baltimore	-3	30	26	0-142	25-34-248	0-2	5 Green Bay (OT)	-2	45	32	20-90	28-42-403	1-2	6 Baltimore	-3'	27	16	33-151	9-23-135	0-1	5 NY Giants	39'	24	16	30-100	20-27-177	0-0
4 Kansas City	40'	7	8	19-108	9-18-53	3-2	4 Arizona	47'	51	30	23-156	29-33-175	0-1	3 Miami	38	9	18	21-52	25-38-224	4-1	4 Tampa Bay	-3	13	20	22-69	23-39-202	2-1
6 Green Bay	46'	21	20	32-138	18-27-171	0-2	6 Philadelphia	33'	14	17	13-56	20-39-284	1-3	6 Philadelphia	-3	26	15	23-67	23-34-283	1-1	6 Tennessee	39	6	15	30-119	16-29-129	1-1
3 Philadelphia	-2'	16	18	21-81	20-36-271	1-0	3 Dallas	-3'	34	27	35-198	23-35-228	0-1	3 Minnesota	41	14	16	34-148	15-35-153	1-1	3 San Diego	-10	17	17	32-68	19-30-282	1-0

BOWL LATE PHONE PLAYS 37-20 65% L/5Y!!! MARQUEE TRIPLE BOWL TOTALS PLAYS 46-30 61% L/11Y!

As of presstime there are 12 bowls that have not been played. The Bowl Late Phones are currently 4-6 with the Bowl GOY having not yet been released. Our Bowl LPS record since 2007 have been a super solid 37-20 65% and with over a dozen games remaining, we are sure to end the 2011 Bowl Season with a big winning record. The Bowl Marquee Totals Plays are now 13-10 on the season and the games rated as **Triple Marquee Totals** over the last 11 years have gone 46-30 61%! With the Wild Card NFL Playoffs starting, if you did not sign up for a Post Season Late Phone Package, there is still time - see page 8 for details. **The Post Season combined LPS record since 2007 is 51-32 61%!**

NFL LATE PHONES CURRENTLY 9-4-2 69% THE LAST 5 WEEKS! NFL MARQUEE GAMES ARE 29-9-1 76% ON THE YEAR!

As always we recap our LPS on page 2 and we are very pleased to have recorded another **winning week** for the FINAL reg season NFL Sunday going 2-1 including a Top Weekly LPS winner. **NFL Late Phones are currently on a 69% run over the last 5 weeks** and that doesn't even include the **Monday Night Selection which went 7-1 88% for the last 8 weeks of the season!** That makes the combined ★ rated NFL Plays 20-9 69% since Wk 10. The NFL Marquees opened the season hot and never cooled down on the year as the **NFL Marquee Plays went an amazing 29-9-1 76%!!!**

THE BEST COMP LINE IN THE COUNTRY!! COMP PHONE CONTINUES TO GIVE FREE WINNERS!!! CALL 1-347-677-1700 EVERY DAY FOR FREE PLAYS AND UPDATES!!!!

Call the Comp Tape every day because with the College Bowls all week and the NFL Post Season starting up and the NBA and college hoops in full swing, the Comp Tape is your complete source for sports information and **FREE Plays each day**. There are special Comp Line Only specials that pop up this time of year as well as **FREE Winners** for upcoming games. With the **BASKETBALL** season now going, you'll be able to also get a free basketball play from some of the Nation's Top NBA handicappers! Those plays are on button #4 of the Comp Line so check out those Free Plays next time you call! We will update you daily on buttons #4 & #6 on what services are offering for the day so you can make a decision before you call your Northcoast Debit Card. We feel that we have the best Community Line for Basketball offered anywhere in the country and share some of the services' actual Late

Purchase Any Handicapper on your Northcoast Debit Card for Just \$20 per service/per day *Daily rates may differ for some services, depending on their card

Ext.	Service	Ext.	Service	Ext.	Service
#11	California Sports	#17	Great Lakes Sports	#25	JB Sports
#12	Friends of Mike Lee	#19	Billy Coleman	#26	Rocketman Sports
#13	Bryan Leonard Sports	#20	Five Star Sports	#27	Red Dog Sports
#14	Stan Lisowski	#21	Young Guns Sports	#28	Mti Sports
#15	Will Cover	#23	Smash Mouth Sports	#29	Hot Shots Sports
#16	Master Sports	#24	Accu Picks	#30	Jim Feist

Phone Plays with you daily for free on button #4 (one play per day). Make sure that you call the Comp Line each day for whichever sport you're interested in. We've got you covered better than anyone else out there for football, basketball and hockey this season! This is the best time of year for sports and FREE Plays as there are many to choose from!

Limit one per customer during bowl season
Northcoast Debit Card ★ Special ★
Get \$500 in Credit FOR \$429!!!
 Offer Valid thru bowl season exp 1/9/12.

2012 Subscribers PAY ONLY \$399 FOR \$500 IN DEBIT CARD CREDIT!!!

WHEN THE SEASON ENDS, USE YOUR NORTHCOAST DEBIT CARD FOR BASKETBALL, HOCKEY & BASEBALL!!!

1-347-677-1700
NORTHCOAST'S COMP LINE FREE WINNERS!

2011 FINAL Newsletter Contest

Here is the Newsletter contest for the 2011 football season. We are happy to provide you with the records and standings from the Power Sweep, Gold Sheet, Power Plays, the Sports Reporter, Winning Points, Pointwise and Playbook. The newsletters are graded from the lines in USA Today. All of the Newsletters are written on Sunday night and by Tuesday most subscribers have access to them online. There will be 6 categories in all. Net winners in College, NFL, and combined as well as the win percentage in College, NFL and combined. An (*) indicates that a Sunday or Monday night game is pending. As of presstime, the regular season college contest is final.

College Wins	College Win %	NFL Wins	NFL Win %	Combined Wins	Combined Win %
Pointwise 61-46	+15	Pointwise 57.0%	Winning Points 39-25	+14	Playbook 61.2%
Power Plays 74-63	+11	Playbook 56.6%	Pointwise 47-35	+12	Winning Points 60.9%
Playbook 30-23	+7	Power Plays 54.0%	Playbook 30-19	+11	Power Sweep 57.6%
Power Sweep 26-29	-3	Power Sweep 47.3%	Power Sweep 19-14	+5	Pointwise 57.3%
Winning Points 38-43	-5	Winning Points 46.9%	Gold Sheet 24-24	0	Gold Sheet 50.0%
Sports Reporter 26-32	-6	Sports Reporter 44.8%	Sports Reporter 17-18	-1	Sports Reporter 48.6%
Gold Sheet 19-35	-16	Gold Sheet 35.2%	Power Plays 10-14	-4	Power Plays 41.7%
					Pointwise 108-81
					+27
					Playbook 60-42
					+18
					Pointwise 57.1%
					Gold Sheet 42.2%
					+9
					Winning Points 53.1%
					+7
					Power Plays 52.2%
					+2
					Power Sweep 51.1%
					-7
					Power Sweep 46.2%
					-16
					Sports Reporter

WE VALUE YOUR OPINION

With the 2011 season drawing to a close, we would like to know what **you** think of **POWER SWEEP**. As a subscriber or newsstand patron, we value your opinion. Each year thousands of people respond and our goal is to improve Power Sweep each year. In recent years we have provided much more in-depth analysis on our Selections (the write-ups used to be one line), eliminated a lot of advertising, added News & Notes on the front page each week and continue to try to pack Power Sweep with the most information of any football newsletter. All these changes were made because **you** asked for them. If there is a statistic or chart you would like to see next year, please fill the questionnaire in below. As our thanks for your valuable time, you can use it as a coupon for a discount on a 2012 subscription, Scorebook or Executive Club Service. Simply check the box at the bottom as to which discount you would like. You must mail the questionnaire to Northcoast Sports Service, PO Box 450829, Cleveland, OH 44145 or for your convenience, you may fax this questionnaire to us toll free at 1-800-433-8885. **Limit one completed questionnaire per address/customer. (Only one discount per product).**

	GREAT	GOOD	FAIR	DON'T READ
College Selections	<input type="checkbox"/>	<input type="checkbox"/>	<input type="checkbox"/>	<input type="checkbox"/>
Pro Selections	<input type="checkbox"/>	<input type="checkbox"/>	<input type="checkbox"/>	<input type="checkbox"/>
Underdog Play of the Week	<input type="checkbox"/>	<input type="checkbox"/>	<input type="checkbox"/>	<input type="checkbox"/>
Over/Under Section	<input type="checkbox"/>	<input type="checkbox"/>	<input type="checkbox"/>	<input type="checkbox"/>
College News & Notes	<input type="checkbox"/>	<input type="checkbox"/>	<input type="checkbox"/>	<input type="checkbox"/>
Computer Corner	<input type="checkbox"/>	<input type="checkbox"/>	<input type="checkbox"/>	<input type="checkbox"/>
System Section	<input type="checkbox"/>	<input type="checkbox"/>	<input type="checkbox"/>	<input type="checkbox"/>
Pro Angle Section	<input type="checkbox"/>	<input type="checkbox"/>	<input type="checkbox"/>	<input type="checkbox"/>
NFL Team Rankings	<input type="checkbox"/>	<input type="checkbox"/>	<input type="checkbox"/>	<input type="checkbox"/>
Pro Stat Plays	<input type="checkbox"/>	<input type="checkbox"/>	<input type="checkbox"/>	<input type="checkbox"/>
Pro SU & ATS Standings	<input type="checkbox"/>	<input type="checkbox"/>	<input type="checkbox"/>	<input type="checkbox"/>
Early Vegas Line	<input type="checkbox"/>	<input type="checkbox"/>	<input type="checkbox"/>	<input type="checkbox"/>
Northcoast Line	<input type="checkbox"/>	<input type="checkbox"/>	<input type="checkbox"/>	<input type="checkbox"/>
Last Week's Stats	<input type="checkbox"/>	<input type="checkbox"/>	<input type="checkbox"/>	<input type="checkbox"/>
NFL Power Ratings	<input type="checkbox"/>	<input type="checkbox"/>	<input type="checkbox"/>	<input type="checkbox"/>
Commentary (pg 2)	<input type="checkbox"/>	<input type="checkbox"/>	<input type="checkbox"/>	<input type="checkbox"/>
College and Pro Logs	<input type="checkbox"/>	<input type="checkbox"/>	<input type="checkbox"/>	<input type="checkbox"/>
<i>The following features are added to the online download version:</i>				
Past History Matchups (online)	<input type="checkbox"/>	<input type="checkbox"/>	<input type="checkbox"/>	<input type="checkbox"/>
Weekly Schedule Grid (online)	<input type="checkbox"/>	<input type="checkbox"/>	<input type="checkbox"/>	<input type="checkbox"/>
Logs (online)	<input type="checkbox"/>	<input type="checkbox"/>	<input type="checkbox"/>	<input type="checkbox"/>
Special Offers (online)	<input type="checkbox"/>	<input type="checkbox"/>	<input type="checkbox"/>	<input type="checkbox"/>

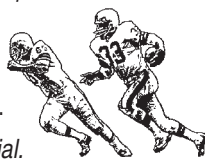
Comments:

My Favorite Section(s) Is:

Name: _____ City: _____

Please use this questionnaire as a coupon for the box I have checked below. One coupon per address/customer per year, please. Enclose Check or Money Order when mailing this questionnaire to us.

- \$5 Off my 2012 POWER SWEEP Subscription
- \$5 Off the 2012 College or Pro Football Scorebook
- I am a 2012 sub, credit my Debit Card \$5 when questionnaire is received.
- \$100 off the 2012 Exec Club. Not applicable with Exec letter special.



REGULAR SEASON TEAM BY TEAM COMPARISONS

CINCINNATI		HOUSTON		-CINCINNATI-	
SU 9-7	ATS 8-6-2	SU 10-6	ATS 11-5	05 WC +3	Pittsburgh 17-31
O/U 10-6		O/U 6-10		09 WC -2	NY Jets 14-45
First Post Season Appearance					
OFF DEF	GAME	OFF DEF	-PITTSBURGH-		
22 20	PTS	24 17	01 CSF -6	Baltimore	27-10
18 18	FD	20 17	01 CF -10	New England	17-24
111 105	Rush Yds	153 96	02 WC -8	Cleveland	36-33
3.9 3.9	Rush YPC	4.5 4.1	02 CSF +4	at Tennessee (OT)	31-34
209 212	Pass Yds	219 190	04 CSF -9	NY Jets	20-17
25 45	Sks vs/by	33 44	04 CF +3	New England	27-41
22 22	TO	20 27	05 WC -3	at Cincinnati	31-17
11.5 7.2	Punt Ret	10.4 9.6	05 CSF +10	at Indianapolis	21-18
22.8 20.8	KO Ret	25.2 22.4	05 CF +3	at Denver	34-17
6.2 6.3	Pen's/gm	6.2 5.5	05 SB -4	† Seattle	21-10
-DENVER-					
PITTSBURGH		DENVER		93 WC +2	
SU 12-4	ATS 7-9	SU 8-8	ATS 7-8-1	at LA Raiders	
O/U 6-10		O/U 9-7		24-42	
OFF DEF	GAME	OFF DEF	96 CSF -14		
20 14	PTS	19 24	Jacksonville		
21 17	FD	18 20	77 WC -8		
119 100	Rush Yds	165 126	at Kansas City		
4.4 4.0	Rush YPC	4.8 4.1	97 CSF +1		
253 172	Pass Yds	152 232	at Pittsburgh		
42 35	Sks vs/by	42 41	97 SB +11		
28 15	TO	30 18	† Green Bay		
10.5 8.4	Punt Ret	12.7 11.5	98 CSF -13		
25.1 23.7	KO Ret	24.5 24.6	Miami		
6.3 6.0	Pen's/gm	6.3 6.2	38-3		
-DETROIT-					
DETROIT		NEW ORLEANS		98 CF -9	
SU 10-6	ATS 7-7-2	SU 13-3	ATS 12-4	NY Jets	
O/U 10-6		O/U 9-7		34-19	
OFF DEF	GAME	OFF DEF	98 SB -7		
30 24	PTS	34 21	† Atlanta		
22 20	FD	26 20	00 WC +3		
95 128	Rush Yds	133 109	at Baltimore		
4.3 5.0	Rush YPC	4.9 5.0	3-21		
301 239	Pass Yds	334 260	03 WC +3		
36 41	Sks vs/by	24 33	at Indianapolis		
23 34	TO	19 16	04 WC -6		
7.9 13.4	Punt Ret	10.1 6.2	at Indianapolis		
24.0 25.6	KO Ret	26.5 25.8	24-49		
8.0 7.4	Pen's/gm	6.2 6.8	05 CSF -3		
-ATLANTA-					
ATLANTA		NY GIANTS		97 WC +2	
SU 10-6	ATS 8-8	SU 9-7	ATS 8-7-1	at Tampa Bay	
O/U 7-9		O/U 8-7-1		10-20	
OFF DEF	GAME	OFF DEF	99 WC +7		
25 22	PTS	25 25	at Washington		
22 18	FD	21 21	13-27		
115 97	Rush Yds	89 121	00 WC +6		
4.0 4.2	Rush YPC	3.5 4.5	at Green Bay		
262 237	Pass Yds	296 255	St Louis		
26 33	Sks vs/by	28 48	12-16		
21 29	TO	24 31	95 WC -3		
9.5 4.8	Punt Ret	6.1 9.9	at Philadelphia		
23.5 24.8	KO Ret	23.3 22.9	37-58		
5.8 6.3	Pen's/gm	5.9 6.9	97 WC +2		
-NEW ORLEANS-					
ATLANTA		NY GIANTS		99 WC +7	
SU 10-6	ATS 8-8	SU 9-7	ATS 8-7-1	at Washington	
O/U 7-9		O/U 8-7-1		13-27	
OFF DEF	GAME	OFF DEF	00 WC +6		
25 22	PTS	25 25	at Green Bay		
22 18	FD	21 21	12-16		
115 97	Rush Yds	89 121	94 WC +4		
4.0 4.2	Rush YPC	3.5 4.5	at Philadelphia		
262 237	Pass Yds	296 255	37-58		
26 33	Sks vs/by	28 48	95 WC -3		
21 29	TO	24 31	at Philadelphia		
9.5 4.8	Punt Ret	6.1 9.9	10-20		
23.5 24.8	KO Ret	23.3 22.9	97 WC +2		
5.8 6.3	Pen's/gm	5.9 6.9	at Tampa Bay		
-NY GIANTS-					
ATLANTA		NY GIANTS		99 WC +7	
SU 10-6	ATS 8-8	SU 9-7	ATS 8-7-1	at Washington	
O/U 7-9		O/U 8-7-1		13-27	
OFF DEF	GAME	OFF DEF	00 WC +6		
25 22	PTS	25 25	at Green Bay		
22 18	FD	21 21	12-16		
115 97	Rush Yds	89 121	94 WC +4		
4.0 4.2	Rush YPC	3.5 4.5	at Philadelphia		
262 237	Pass Yds	296 255	37-58		
26 33	Sks vs/by	28 48	95 WC -3		
21 29	TO	24 31	at Philadelphia		
9.5 4.8	Punt Ret	6.1 9.9	10-20		
23.5 24.8	KO Ret	23.3 22.9	97 WC +2		
5.8 6.3	Pen's/gm	5.9 6.9	at Tampa Bay		

The Playoffs - ROUND BY ROUND

The following records are team and divisional performances in the post season. We have updated the records to be for 2002-2010 as records from 1983 on were not producing relevant data. However if a long term trend applies from 1983 forward it has been noted. Playoff games between division rivals are not included in the records here.

WILD CARD ROUND

- Teams that played in Wild Card games are 21-15 ATS & 17-19 O/U in the Division Round.
- Teams that played in Wild Card games are 5-5 ATS & 5-5 O/U in the Conference Championships.
- Teams that played in Wild Card games are 6-0 ATS & 3-3 O/U in the Super Bowl.

Home Favorites: 11-16 ATS & 12-14-1 O/U	How Divisions Fared In Wild Card Rounds since 2002:		
Home Dogs: 4-5 ATS & 4-5 O/U	AFC East	5-2	NFC East 5-4
HOME FAVORITES S/02:	AFC North	4-2	NFC North 2-4
Home Favorites of:	AFC South	4-6	NFC South 3-4
0-2' 1-5 ATS & 2-4 O/U	AFC West	2-5	NFC West 5-2
3-6' 5-8 ATS & 6-6-1 O/U			
7-9' 3-3 ATS & 3-3 O/U			
10+ 2-0 ATS & 1-1 O/U			

DIVISION VS DIVISION Wild Card 1983-2010 ATS

AFC vs	EAST	NORTH	SOUTH	WEST	OUT OF DIV
EAST	HT 5-1	2-8-1	3-0	5-2	10-10-1
NORTH	8-2-1	HT 1-4	0-2	4-1	12-6-1
SOUTH	0-3	2-0	HT 0-0	2-1	5-4
WEST	2-5	1-4	2-3	HT 4-1	5-12
NFC vs	EAST	NORTH	SOUTH	WEST	OUT OF DIV
EAST	HT 1-3	9-3	1-2	5-4	15-9
NORTH	3-9	HT 1-3-1	0-3	6-0-1	9-13-1
SOUTH	1-2	2-0	HT 0-0	0-2	3-4
WEST	4-6	0-6-1	2-0	HT 1-2	7-12-1HT

is the home team's record when div foes face each other.

DETROIT (10-6) NFC WILDCARD NEW ORLEANS (13-3)

Saturday, January 7th • 8:00 pm ET • NBC



POWER RANKING PROJECTION	RUSH	PASS	POINTS	TO'S	ST	A.O.R.
DETROIT	57	370	23	1.3	#27	99.5
NEW ORLEANS	158	413	40	1.7	#6	97.5

LIONS ATS: 7-7-2 O/U: 10-6

RUSHING	GP/GS	DC	ATT	YDS	AVG	LNG	TD
Jahvid Best	6/6	1	84	390	4.6	88	2
Kevin Smith	7/4	3	72	356	4.9	43	4
Maurice Morris	16/5	2	80	316	4	31	1
Kealand Williams	15/0	U	58	195	3.4	18	2
Nate Burleson	-	wr	11	85	7.7	20	0
Matthew Stafford	-	qb	22	78	3.5	22	0

SAINTS ATS: 12-4 O/U: 9-7

RUSHING	GP/GS	DC	ATT	YDS	AVG	LNG	TD
Darren Sproles	16/4	4	87	603	6.9	36	2
Pierre Thomas	16/7	U	110	562	5.1	33	5
Mark Ingram	10/4	1	122	474	3.9	35	5
Chris Ivory	6/2	U	79	374	4.7	35	1
Drew Brees	-	qb	21	86	4.1	20	1

NO beat the Lions 31-17 as an 8.5 pt HF on SNF just 5 weeks ago as Brees hit for 342 yds (72%) with 3 TD's and a 9.5 ypa vs a Lions defense short 3 starters (DT Suh, FS Delmas, CB Houston). The Saints went into the half with a 304-184 yd edge with a 24-7 lead and held DET to 0-6 on 3rd downs on in the 2H. Stafford had 408 yds passing (70%) with a 1-1 ratio but DET was still playing undisciplined ball and was hit with 11 penalties. Common foes are plentiful with the NFC North and South squaring off TY with NO being +106 ypg (-6 TO's) with a 33-22 avg score for a 7-2 SU/6-3 ATS mark. DET went 5-4 SU/3-5-1 ATS vs the same foes with a +37 yd difference (-2 TO's) for a 28-27 score deficit. This is DET's 3rd road game in 4 wks and 1st playoff game since 1999 for a franchise that hasn't won a postseason game since Jan 1992. DET went 5-3 SU/3-5 ATS on the road TY with a +34 yd mark (-2 TO's) and a 29-28 avg score.

Stability breeds success and for the 6th straight year Brees/Payton have a top 5 passing offense. In his L/8 gms Brees has destroyed pass defenses avg 341 ypg (72%) with a 27-4 ratio and his lowest QBR TY at home was 96.8 vs ATL. The diff in TY's #1 off is that 56% of the rec's and 47% of the rec yds are thru the RB/TE's which allows more blockers to get into play after the catch. NO's 56.7% rate on 3rd downs is the best since IND's 56.1% back in 2006. NO's #6 ground game is very underrated as no single RB is putting up big #'s but like NE, they play the back that fits the situation. For the 3rd straight year NO put 5 players in the Pro Bowl and all 5 are on offense. Graham broke Kellen Winslow's 31 year old record of 1,290 yds for a TE and is only in his 2nd year in the league. NO has had the same OL for 8 straight gms headlined by the best OG tandem in the NFL with Carl Nicks and Jahri Evans. NO didn't have a single defender voted to the Pro Bowl TY and after being 4th in yds and 7th in pts LY they are 24th and 14th. After earning 25 takeaways LY they only have 16 TY. MLB Vilma has been playing with a sore knee and teams have gotten used to DC Gregg Williams' schemes. Williams still likes to disperse the pressure from all over as noted by the fact that SS Roman Harper has more sks than DE Will Smith. After finishing 28th and 22nd in our special teams rankings in '09-'10, NO has a top 10 unit TY thanks to Darren Sproles who has 1,000+ total yds on offense and 1,000+ KR yds TY along with a healthy 11.0 PR avg.

It's not hard to associate the health of Matt Stafford to the Lions' 10 win season TY. After playing in just 13 gms in his first 2 yrs for a rookie-level total of 216 ypg (55%) with a 19-21 ratio, he exploded to 314 ypg (64%) with a 41-16 ratio. Aside from Jahvid Best, DET has had 10 of 11 offensive str's healthy for all 16 gms TY which in turn saw their 1st 400+ pt season S/95 which was also the last time they had 6,000 yds offense. The lack of a run gm has been a thorn in the side of OC Scott Linehan TY as DET has gotten off to a slow start in most games TY (outgained in 10 gms at half). While WR Calvin Johnson (only Pro Bowler TY) dictates the opposing defenses, Titus Young has quietly surged as a slot WR in the past 5 games (19 rec 12.2 ypc 4 TD). DET was forced to bring back Kevin Smith who was released back in March to bolster their RB depth and despite a high ankle sprain at the end of the yr he's been a factor. DET's OL, which has played 15 of 16 games together, is just 16th in sks allowed it's to be expected with over 650 pass att's. It's no secret that DET has one of the deepest and most talented DL's in the NFL when they play disciplined ball but their LB unit is one of the league's most improved. Stephen Tulloch and Justin Durant have been perfect fits for the scheme and have been outstanding for the #24 run D. In Schwartz's 1st 2 yrs DET gave up a comb 58-23 ratio with ypa's of 8.1 and 7.3. TY cut it down to a 20-20 ratio prior to GB as they had the same 4 str's for 10 of the initial 11 games but FS Delmas (MCL sprain) status is unknown after sitting out 5 straight. DET does have a bottom tier ST's as their coverage and return units haven't impressed. Incl playoffs since 2008, NO has been lethal at home vs a non-div foe with a 19-3 SU/17-4-1 ATS mark covering 8 straight by a 37-17 avg score with a +169 yd differential. After the CAR game WR Colston noted "mentally and emotionally, we're as prepared as a team can be." DET has to be commended for making the playoffs but getting shredded by Matt Flynn LW has to be a big concern for a defense which now faces the record-setting Brees. NO has better depth, a huge crowd edge and much more experience in this situation, making them the play.

DET	NO	DET	NO	DET	NO
QB	-	✓	RB	-	✓
DL	-	✓	DE	-	✓
LB	-	✓	DE	-	✓
DB	✓	-	DE	-	✓

FORECAST: SAINTS BY 21

RATING: 4★

ATLANTA (10-6) NFC WILDCARD NY GIANTS (9-7)

Sunday, January 8th • 1:00 pm ET • FOX



POWER RANKING PROJECTION	RUSH	PASS	POINTS	TO'S	ST	A.O.R.
ATLANTA	110	265	23	1.6	#19	98.2
NY GIANTS	91	295	30	1.8	#23	99.5

FALCONS ATS: 8-8 O/U: 7-9

RUSHING	GP/GS	DC	ATT	YDS	AVG	LNG	TD
Michael Turner	16/15	5	301	1340	4.5	81	11
Jacquizz Rodgers	16/0	5	57	205	3.6	13	1
Jason Snelling	15/0	7	44	151	3.4	18	0
Matt Ryan	-	qb	37	84	2.3	12	2
Julio Jones	-	wr	6	56	9.3	19	0

GIANTS ATS: 8-7-1 O/U: 8-7-1

RUSHING	GP/GS	DC	ATT	YDS	AVG	LNG	TD
Ahmad Bradshaw	12/9	7	171	659	3.9	37	9
Brandon Jacobs	14/6	4	152	571	3.8	28	7
DJ Ware	16/1	U	46	163	3.5	17	0
Da'Rel Scott	11/0	7	5	16	3.2	8	0
Eli Manning	-	qb	35	15	0.4	12	1

These teams haven't met since mid-2009 w/the Giants winning 34-31 but failing to cover as a 7 pt HF in OT. The Giants went 4-4 SU/3-4-1 ATS at home TY w/a +30 yd edge (+3 TO's) for a 23.3-23.1 avg score. ATL went 4-4 SU/3-5 ATS on the road w/a +47 ypg differential (+1 TO's) getting outscored 23-20. ATL went 2-3 SU/1-4 ATS vs the common foes of PHI, SEA, GB, and NO getting outgained by 28 ypg (+2 TO's) and outscored 31-24 on avg. The Giants earned a 1-4 SU/2-3 ATS record w/a -46 ypg margin (-1 TO's) and was outscored 31-25 on avg. Coughlin has covered 5 of his L/6 playoff games. ATL is just 1-5 ATS TY vs foes w/a winning record while the Giants went 2-2 ATS.

ATL's #19 offense is perceived as one of the NFC's most explosive units but the truth is that prior to the final week of the year they were 12th with a combined 63 plays with runs/passes of 20+ yds. They want to be a vertical passing/power run team behind Michael Turner but they've struggled to implement that. While Turner has six 100 yd rushing games TY he only av'd 56 ypg (3.3) in the 5 games prior to 172 yds vs TB. Roddy White logged his 5th straight season of 1,150 yds receiving TY and his overall impact has dipped due to coverage and Julio Jones. Tony Gonzalez continues to impress with another top 5 TE season (80 rec's) but he's lost a step and isn't quite as dynamic in the passing game. While Jones has impressed with his deep speed TY logging five 100 yd receiving games he's also basically missed 4 games due to hamstring issues. The OL gave up 13 sks in the 1st 3 games as it adjusted to the loss of RG Harvey Dahl in FA but since then they've given up 16 sks or a fantastic 1 for every 36 att's. ATL is only #19 in sks earned for the #12 defense which is the best finish for DC Brian Van Gorder's tenure. While DE John Abraham is still the big name on the DL, Jonathan Babineaux had a solid year as well. The back 7 played at a much higher level than in 2010 with Sean Weatherspoon playing some dominant ball TY for the #6 rush defense. ATL's secondary is better than their #20 pass defense ranking but injuries to SS William Moore followed by one to up and coming CB Brent Grimes put the unit off track. Since mid-OT, ATL has only allowed two 300 yd passing games, both to Drew Brees. ATL's special teams are a bit below avg in our rankings as while Eric Weems has had a solid yr, Boshers hasn't been able to boom punts due to the offense's success TY.

Statistically, Eli Manning isn't that far off from what you'd expect from him but he's had arguably his best season ever. Working behind 5 different OL combos, 2011 was another year with skill players being dinged up, yet Manning managed to throw for a career-high in passing yards. The Giants have their 1st 1,000 yd yd of receivers in Hakeem Nicks and Victor Cruz. Nicks has been a reliable but not overly splashy as the #1 WR while Cruz has been the 2nd best slot WR in the NFL TY behind Welker. Mario Manningham is now the possession WR and when healthy Jake Ballard is a solid receiving TE. Bradshaw and Jacobs each have a single 100 yd rushing game TY due to injuries to themselves and the OL. They are built to be a power rushing team and are much better than their #31 rush off ranking. The best player on the Giants #27 defense TY has been Jason Pierre-Paul whose 16.5 sks is quite impressive as he entered 2011 as the #3 pass rusher for the team. The LB's are avg even behind a strong DL, but the secondary has been a major liability TY due a lack of depth. They've given up five 300 yd passing games avg 335 ypg (58%) w/a 15-3 ratio in those. This is another unit getting healthier late in the ssn though and SS Kenny Phillips has been excellent when healthy. The Giants special teams aren't much better than 2010's #29 unit as they've struggled on both sides of the ball on punts and are below avg on KR's.

Over the last four weeks, the Giants have the #8 and #16 units (+3 TO's) vs a good Dallas offense, a tougher than advertised Washington team and a physical Jets defense. Atlanta has the #4 and #17 units (+9 TO's) but has faced a weak Carolina def. a depleted Jacksonville team, was hammered by New Orleans and beat a Tampa Bay team that quit at Thanksgiving. We now have a dome team in cold weather vs a Giants team playing with confidence with a brutal DL and home crowd. We'll side with the more physical team at home with a reasonable line.

ATL	NYG	ATL	NYG	ATL	NYG
QB	-	✓	RB	-	✓
DL	-	✓	DE	-	✓
LB	-	✓	DE	-	✓
DB	-	✓	DE	-	✓

FORECAST: ATLANTA BY 10

RATING: 2★

CINCINNATI AT HOUSTON

Table with columns for Cincinnati and Houston teams, including line numbers, scores, and performance metrics for various players.

DETROIT AT NEW ORLEANS

Table with columns for Detroit and New Orleans teams, including line numbers, scores, and performance metrics for various players.

TOP SEASON PERFORMANCES

Table listing top season performances for Cincinnati and Houston players, including QB, RB, and REC stats.

TOP SEASON PERFORMANCES

Table listing top season performances for Detroit and New Orleans players, including QB, RB, and REC stats.

PITTSBURGH AT DENVER

Table with columns for Pittsburgh and Denver teams, including line numbers, scores, and performance metrics for various players.

ATLANTA AT NY GIANTS

Table with columns for Atlanta and NY Giants teams, including line numbers, scores, and performance metrics for various players.

TOP SEASON PERFORMANCES

Table listing top season performances for Pittsburgh and Denver players, including QB, RB, and REC stats.

TOP SEASON PERFORMANCES

Table listing top season performances for Atlanta and NY Giants players, including QB, RB, and REC stats.

Playoff Records vs Spread 1977 - 2010

All records are vs the spread. HF - Home Favorite, HD - Home Underdog, AF - Away Favorite, AD - Away Underdog SBF - Super Bowl Favorite, SBD - Super Bowl Underdog
SUPER BOWL SPREAD RECORDS INCLUDE ALL SUPER BOWLS PRIOR TO 1977

AFC	HF	HD	AF	AD	SBF	SBD	TOT	NFC	HF	HD	AF	AD	SBF	SBD	TOT
BAL	4-4	0-1	2-0	6-8	1-0	0-0	13-13	ATL	1-2	1-0	0-0	4-5	0-0	0-1	6-8
BUF	6-3-1	0-0	1-0	2-7	0-1	0-3	9-14-1	ARZ	0-0	2-0	0-0	2-3	0-0	1-0	5-3
CIN	5-2	0-1	0-0	0-1	0-1	1-0	6-5	CHI	6-7	0-1	0-0	2-5	1-0	0-1	9-14
CLE	0-0	0-0	0-0	1-0	0-0	0-0	1-0	CAR	1-1	1-0	0-0	4-2	0-0	1-0	7-3
DEN	9-5	1-0	0-0-1	4-6	1-1	1-3	16-15-1	DAL	8-6	0-0	1-5	4-4	4-2	1-1	18-18
HOU	0-0	0-0	0-0	0-0	0-0	0-0	0-0	DET	1-1	0-0	0-1	1-5	0-0	0-0	2-7
IND	6-4	0-1	0-1	5-5	1-2	1-0	13-13	GB	7-4-1	0-0	2-1	6-4-13-1-1	0-0	0-0	16-11-3
JAX	2-1	0-0	0-1	3-4	0-0	0-0	5-6	MIN	6-3	0-1	0-1	6-12	0-1	0-3	12-21
KC	0-5	0-2	0-0	2-5	0-0	1-1	3-13	NO	1-5	1-0	0-1	0-3	0-0	1-0	4-8
MIA	6-6	3-3	0-0	1-8	1-1	1-2	12-20	NYG	5-4	2-0	0-0	8-3	1-0	2-1	18-8
NE	7-5-1	0-0	0-0	6-6	0-2	1-2-1	14-15-2	PHI	6-7	3-0	1-3	5-6	0-1	1-0	16-17
NYJ	3-2	0-0	0-0	11-6	0-0	1-0	15-8	SF	11-8-1	1-1	0-1	3-5	3-1	1-0	19-16-1
OAK	9-3	1-0	0-0	5-2-1	1-1	2-1	18-7-1	SEA	5-2	1-0	0-1	3-5	0-0	0-1	10-8
PIT	12-8	1-1-1	1-0	7-4	4-2	1-1	27-15-1	STL	4-5	0-1	1-1	5-7	0-1-1	0-1	10-16-1
SD	5-5	0-0	1-2	4-2	0-0	0-1	10-10	TB	2-3	1-1	0-1	2-4	0-0	1-0	6-9
TEN	2-7	1-0	1-1	7-8-1	0-0	0-0-1	11-16-2	WAS	8-2	1-0	0-0	6-5	1-2	2-0	18-9

2011 NFL POWER RATINGS

We grade each team position by position and list the 2011 Power Ratings. Each week we update these Power Ratings in our weekly Power Sweep editions. The following are the 2011 Power Ratings.



TEAM	RTG	TEAM	RTG	TEAM	RTG
1 Green Bay.....	104.2	11 Atlanta	101.1	21 Washington	97.6
2 New Orleans...	104.0	12 San Diego	101.0	22 Miami	97.2
3 New England...	103.8	13 Philadelphia ...	100.8	23 Seattle	96.8
4 Pittsburgh.....	103.2	14 Cincinnati	100.6	24 Buffalo	96.2
5 San Francisco...	102.8	15 NY Jets	100.6	25 Arizona	96.2
6 Baltimore	102.6	16 Chicago	100.4	26 Kansas City	95.9
7 NY Giants	102.4	17 Denver	99.8	27 Minnesota.....	93.3
8 Houston	101.8	18 Oakland	99.2	28 Jacksonville	93.1
9 Dallas	101.3	19 Carolina	98.6	29 Tampa Bay	92.9
10 Detroit	101.2	20 Tennessee	97.7	30 Cleveland	92.4
				31 Indianapolis	91.0
				32 St Louis	90.1

POWER RATING PLAY OF THE WEEK: NO PLAY

1995-2011 Power Ratings Record 78-54-2

★ LATE PHONE SPECIALS ★

WILD CARD EXECUTIVE CLUB SERVICE.. \$199
 Receive Executive Club service for the Wild Card Weekend. You'll get all the ★ rated NFL Plays as well as Top Opinions not released as Selections on all four NFL Wildcard games. You will also receive Side and Total Plays (and opinions) for the last 5 bowl games (Jan 4 Orange Bowl thru the BCS National Championship Game on Jan. 9th).

NFL Playoff Package \$349

- All Northcoast NFL Playoff Late Phones
- Opinions on Games not released as LPS
- The 2011-'12 NFL Playoff Play of the Year
- All NFL Plays and Opinions on the Totals
- All the Super Bowl Prop Plays released from Northcoast's Private Play Hotline

WILD CARD WEEK THRU THE SUPER BOWL!

	TO	Rnk	FD-Off	Rnk	FD-Def	Rnk	FD-diff	Rnk	KR-Off	Rnk	PR-Off	Rnk	KRD	Rnk	PRD	Rnk	NetP	Rnk	Pen	Rnk
Atlanta	6	7	349	6	292	11	57	4	23.5	19	9.5	20	25.2	23	4.7	1	40.6	17	93	10
Baltimore	1	14	312	15	269	4	43	7	24.9	9	9.6	19	29.6	31	12.0	24	41.1	12	92	9
Cincinnati	1	14	285	22	284	7	1	15	22.8	24	11.5	7	21.3	4	7.1	6	41.2	11	99	13
Denver	-11	28	286	20	315	19	-29	24	24.5	12	12.7	3	24.6	21	11.6	21	41.6	6	101	16
Detroit	13	4	349	6	325	21	24	10	24	15	7.9	26	26.4	29	13.8	32	37.7	30	128	30
Green Bay	22	2	353	5	358	30	-5	16	24.5	11	10.9	12	23.2	14	13.5	30	40.0	22	76	1
Houston	7	5	321	13	270	5	51	5	25.2	7	10.4	15	22.4	8	9.4	14	39.9	23	99	13
New England	14	3	399	2	370	32	29	8	21.4	29	10.3	16	21.6	6	8.6	12	42.6	5	87	6
New Orleans	-4	22	416	1	326	22	90	1	26.5	3	10.1	17	26.2	28	6.2	5	45.8	2	99	13
NY Giants	5	9	331	10	338	26	-7	17	23.3	21	6.1	29	23.2	14	10.3	17	40.7	16	94	11
Pittsburgh	-8	26	341	9	264	1	77	2	25.1	8	10.5	13	24.3	20	8.6	12	41.3	10	101	16
San Francisco	26	1	282	23	267	2	15	14	27.2	1	12.4	5	22.7	9	8.3	11	46.9	1	113	26

Northcoast Debit Card

★ Special ★

Get \$500 in Credit FOR \$429!!!!

Offer Exp 1/9/12 2012 Subscribers

PAY ONLY \$399 FOR \$500 IN DEBIT CARD CREDIT!!!

WHEN THE SEASON ENDS, USE YOUR NORTHCOAST DEBIT CARD FOR BASKETBALL, HOCKEY & BASEBALL!!!!!!!

SUBSCRIBE TO POWER SWEEP 2012!

& RECEIVE ALL 4 OF OUR SPECIAL BONUSES FREE!!

BONUS #1 FREE SEPTEMBER 5★ - \$50 VALUE The highest rated play that we release is a 5★ Play. Our record for College 5★s in September is now 20-13 61%! That's DOCUMENTED! You receive our first College 5★ September Late Phone Selection of the 2012 season ABSOLUTELY FREE when you subscribe to Power Sweep! Don't miss out on this Easy Winner!

BONUS #2 FREE 2 WEEKS NFL PRESEASON PHONE SERVICE - \$150 VALUE OR NORTHCOAST DEBIT CARD - \$50 VALUE - We tell you each year that Preseason football is the easiest to forecast. Our 29 year record of NFL Exhibition Late Phones is a DOCUMENTED 63%! We are the #1 ranked service over 23 years as DOCUMENTED by The Sports Monitor!!! Get your 2012 season started on a winning note and receive 2 WEEKS OF PRESEASON NFL LATE PHONE PLAYS ABSOLUTELY FREE!!! OR \$50 credit on a 2012 Northcoast Debit Card (added 8/30/12). (Choose One).

BONUS #3 FREE POWER SWEEP PREVIEW ISSUE This is a must read Preseason publication. Who will be this year's NFL Champ? Get our Preview of the 2011 season & more in this information packed issue, yours ABSOLUTELY FREE!!!!

BONUS #4 FREE SCHEDULES - \$15 VALUE FREE Schedules sent automatically from Northcoast Sports. Sent to you from Preseason thru the Post Season. Additional copies can also be purchased at a discounted rate.

DOWNLOAD PRICE, PLEASE ADD \$40 FOR MAIL DELIVERY

SAVE NOW - PAY ONLY \$84

All Post Season Totals Plays Are on the Hotline! RATED: SINGLE DOUBLE TRIPLE

Use the NC Debit Card \$9 PER PLAY NORTHCOAST SPORTS PRIVATE PLAY HOTLINE

Pay \$12 thru the Northcoast Office

EXT #1 ON THE NORTHCOAST DEBIT CARD SYSTEM

6 BOWLS TO GO!

TRIPLE RATED BOWL TOTALS 46-30 61% L/11Y

SUPER BOWL PROP PLAYS ALSO ON THE HOTLINE!

Odds to win the 2012 Super Bowl XLVI

Green Bay Packers	9/5
New England Patriots	4/1
New Orleans Saints	9/2
Baltimore Ravens	8/1
Pittsburgh Steelers	11/1
San Francisco 49ers	11/1
New York Giants	20/1
Atlanta Falcons	35/1
Detroit Lions	40/1
Houston Texans	40/1
Denver Broncos	50/1
Cincinnati Bengals	65/1

Odds to win the 2012 AFC Conference

New England Patriots	11/10
Baltimore Ravens	9/4
Pittsburgh Steelers	7/2
Houston Texans	16/1
Cincinnati Bengals	25/1
Denver Broncos	25/1

Odds to win the 2012 NFC Conference

Green Bay Packers	4/5
New Orleans Saints	3/1
San Francisco 49ers	6/1
New York Giants	10/1
Atlanta Falcons	16/1
Detroit Lions	22/1

RENEW FOR 2012 FOR AS LITTLE AS \$84*

- I enclose \$84 for my '12 DOWNLOAD* subscription to POWER SWEEP. (Every issue thru the Super Bowl!). This includes all Power Sweep Bonus Offers incl FREE Schedules (mailed by request only, free download online).
- I enclose \$84 for my '12 DOWNLOAD subscription to POWER PLAYS. (Every issue thru the Super Bowl!). This includes all Power Sweep Bonus Offers incl FREE Schedules (mailed by request only, free download online).

NORTHCOAST SPORTS SERVICE
 PO Box 450829 • Cleveland, OH 44145
 OR ONLINE @ www.ncsports.com

VISA, MC, Discover, American Express are gladly accepted online or when you call to order at:
 Prices in Vol. 29 Issue 19 Expire 1-8-12
 Cannot be used with any other offer
 OFFICE HOURS (eastern time zone):
 M 9:00-8:30, Tu/W/F 9:00-6:00, Th 9:00-7:00, S/S 9:00-1:00p
1-800-654-3448

ARIZONA (SU: 8-8 ATS: 7-7-2) G					ATLANTA (SU: 10-6 ATS: 8-8) A					BALTIMORE (SU: 12-4 ATS: 8-7-1) A					BUFFALO (SU: 6-10 ATS: 6-9-1) A					CAROLINA (SU: 6-10 ATS: 9-6-1) G										
DATE	OPPONENT	W/L	LINE	SCORE	TOTAL	DATE	OPPONENT	W/L	LINE	SCORE	TOTAL	DATE	OPPONENT	W/L	LINE	SCORE	TOTAL	DATE	OPPONENT	W/L	LINE	SCORE	TOTAL	DATE	OPPONENT	W/L	LINE	SCORE	TOTAL	
S 11	Carolina	T	-7	28-21	37'	S 11	at Chicago	L	-2	12-30	41'	S 11	Pittsburgh	W	-1	35-7	36'	S 11	at Kansas City	W	+4	41-7	39'	S 11	at Arizona	T	+7	21-28	27'	
S 18	at Washington	W	+3	21-22	44	S 18	Philadelphia (N) W	+2	+5	31-31	49'	S 18	at Tennessee	L	-5	13-26	38'	S 18	Oakland	L	-4	38-35	42	S 18	Green Bay	W	+10	23-30	45	
S 25	at Seattle	L	-3	10-13	43	S 25	Tampa Bay	L	-2	15-16	46'	S 25	at St Louis	W	-5	37-7	42	S 25	New England	W	+7	34-31	54'	S 25	Jacksonville	W	+3	16-10	43	
O 2	at NY Giants	L	+1	27-31	44'	O 2	at Seattle	L	-5	10-28	39'	O 2	NY Jets (N)	W	-4	34-17	43'	O 2	at Cincinnati	L	-3	20-23	43'	O 2	at Chicago	W	+6	29-34	42'	
O 9	at Minnesota	L	+3	10-34	45	O 9	Green Bay (N)	L	+5	14-25	53	O 9	BYE					O 9	Philadelphia	W	+3	21-24	52'	O 9	New Orleans	W	+6	27-30	51'	
O 16	BYE					O 16	Carolina	W	-3	31-17	50	O 16	Houston	W	-7	29-14	45	O 16	at NY Giants	T	+3	24-27	50	O 16	at Atlanta	L	+3	17-31	50	
O 23	Pittsburgh	L	+3	20-32	44	O 23	at Detroit	W	+4	23-16	47'	O 23	at Jacksonville (M)	L	-10	7-12	38	O 23	BYE					O 23	Washington	T	+3	23-40	45	
O 30	at Baltimore	W	+2	27-30	43	O 30	BYE					O 30	Arizona	L	-12	30-27	43	O 30	at Washington	W	+4	23-0	45	O 30	Minnesota	L	-3	21-24	46'	
N 6	at Philadelphia OT	W	+9	17-13	41	N 6	at Indianapolis	W	-6	-1	7-1	45'	N 6	at Pittsburgh (N)	W	+3	23-20	42	N 6	NY Jets	L	-2	11-27	45	N 6	BYE				
N 13	at Philadelphia	W	+13	21-17	46'	N 13	New Orleans OT	L	E	23-26	49'	N 13	at Seattle	L	-6	17-22	41	N 13	at Dallas	L	+5	7-44	41	N 13	Tennessee	L	-3	3-20	46'	
N 20	at San Francisco	L	+10	7-23	40'	N 20	Tennessee	L	-6	23-17	44	N 20	Cincinnati	W	-7	14-24	40'	N 20	at Miami	L	+3	8-35	44	N 20	at Detroit	W	+7	35-49	47'	
N 27	at St Louis	W	+2	23-20	40'	N 27	Minnesota	W	-9	24-14	44	N 27	at Cincinnati	L	-7	31-10	34	N 27	at NY Jets	W	+9	24-28	42'	N 27	at Indianapolis	L	-3	27-19	47'	
D 4	Dallas	OT	W	+4	19-13	47'	D 4	at Houston	L	-1	10-17	38	D 4	at Cleveland	W	-7	24-10	38	D 4	Tennessee	L	-1	17-23	43'	D 4	at Tampa Bay	W	+1	38-19	47'
D 11	San Francisco	W	+3	21-19	39'	D 11	at Carolina	W	-2	31-23	47'	D 11	Indianapolis	L	-16	24-10	41	D 11	at San Diego	L	-7	10-37	48	D 11	Atlanta	L	+2	23-31	47'	
D 18	Cleveland OT	L	-6	20-17	37'	D 15	Jacksonville (Th)	L	-13	-1	14-4	42'	D 18	at San Diego (N)	L	-2	14-34	44	D 18	Miami	L	-2	23-30	40	D 18	at Houston	W	+6	28-13	45
D 24	at Cincinnati (Sat)	L	+4	16-23	41	D 26	at New Orleans (M)	L	+7	16-15	52'	D 24	Cleveland (Sat)	L	-11	20-14	39	D 24	Denver (Sat)	W	+2	40-14	43'	D 24	Tampa Bay (Sat)	W	-7	48-16	48	
J 1	Seattle OT	T	-3	23-20	40	J 1	Tampa Bay	W	-10	45-24	45	J 1	at Cincinnati	W	-2	24-16	38	J 1	at New England	L	+10	21-49	49'	J 1	at New Orleans	L	+7	17-15	54	

LOGS UPDATED ALL SEASON
4 PAGES-124 COLLEGE AND ALL NFL TEAMS
 All the ATS & SU Resets Updated for you weekly!
SUBSCRIBE NOW TO POWER SWEEP 2012 - LOG EDITION
 Add \$10 to cover postage/printing for logs
LOGS ARE INCLUDED with the download version 1-800-654-3448
 LOGS ARE VIEWABLE ONLINE AT WWW.NCSPTS.COM EACH WEEK • FREE FOR 2012 SUBS